



REDSTONE
AUCTIONS

Craig Buchanan AL#1365 TN#4806

John Tumminello AL#5564

William Gray AL#5429

ONLINE BIDDING ENDS THURSDAY MAY 30th at NOON

TURNKEY RENTAL OPPORTUNITY • EXCELLENT RENTAL HISTORY



2013 Shady Lane, Huntsville, AL 35810

Preview • 5/29 • 10am-Noon • Or by appointment • More info on back of page

IMMEDIATE CASH FLOW! This 1475± sq. ft., 3 bedroom, 2 bath brick home has been a steady income producer for several years and is currently rented for \$1250 per month. The kitchen, dining, and living areas are spacious and open. The master suite features a large private bath and laundry, and the other 2 bedrooms offer plenty of space, too. Outside, the shady lot is partially fenced. The central location is moments away from just about everything in town. Check it out and then bid to win at online auction!

Terms: 10% down due at close of auction with balance due on or before 30 days. A 10% buyer premium applies. Bidders are encouraged to conduct due diligence and inspect prior to the end of the online auction. Sells in "AS IS" condition. Homes built prior to 1978 may contain lead paint. Please contact us within 10 days of the auction close to inspect. Contents of this ad derived from sources believed to be correct but not guaranteed. Measurements and acreage provided are considered more or less. Full terms & conditions may be viewed online prior to bid registration.

**For a video tour, more photos, and to bid online:
redstoneauctions.com • 256-696-SOLD**



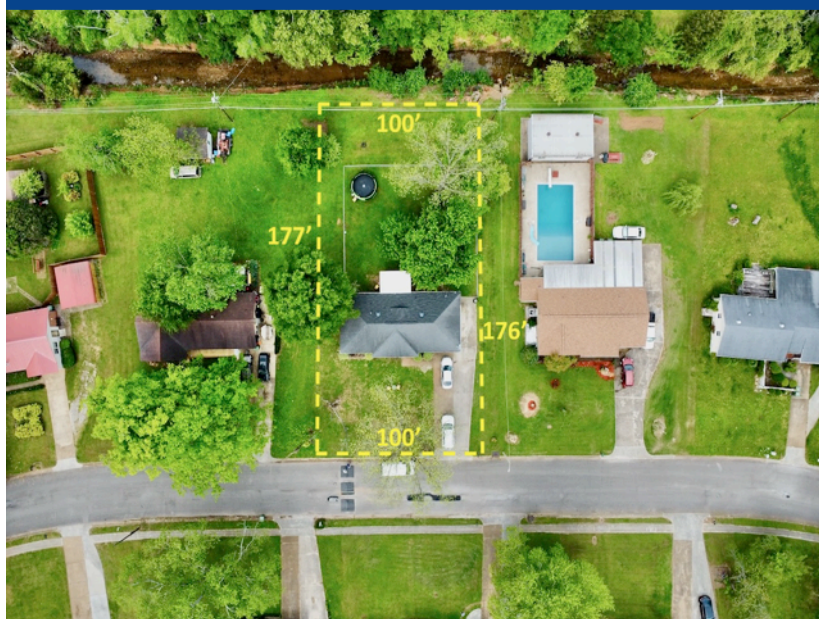
Craig Buchanan AL#1365 TN#4806

John Tumminello AL#5564

William Gray AL#5429

2013 Shady Lane Drive, Huntsville, AL 35810

Approximated from tax records • Not to scale



LOCATION! University Drive, the Parkway, and more are located just moments away.

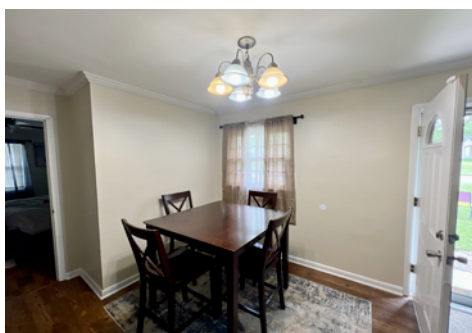
Approximate Property Data

Living Room	13x13
Kitchen	14x11
Breakfast	10x8
Dining	13x13
Bedroom	15x13
Bedroom	10x11
Bedroom	11x13

2 full baths • 1475± sq. ft.

AUCTIONEER'S NOTE: This property is currently zoned R1-B. Schools are Highlands Elementary, McNair Jr. High, & Jemison High. Rent is \$1250 per month with a month-to-month lease in place.

DIRECTIONS: From Memorial Parkway, travel west on Oakwood Avenue and turn right on Shady Lane Drive. Travel approximately 1 block to the home on the left. Auction signs posted.



**For a video tour, more photos, and to bid online:
redstoneauctions.com • 256-696-SOLD**